



ANNUAL REPORT 2021

**FOR FINANCIAL YEAR
ENDED 31 MARCH 2021**

**BETHESDA COMMUNITY
ASSISTANCE AND
RELATIONSHIP
ENRICHMENT CENTRE**

www.bcare.org.sg

CONTENTS

ABOUT US	2
Our Mission	2
Our Core Values	2
OVERVIEW OF CHARITY	3
EXECUTIVE DIRECTOR'S MESSAGE	4
LEADERSHIP	5
OUR ORGANISATION STRUCTURE	7
OUR WORK: PROGRAMMES & ACTIVITIES	8
Mental Health & Social Services	8
Eldercare Services	10
Children, Youth & Services	12
Recreation and Wellness	16
THE YEAR AHEAD	17
GOVERNANCE	18
Disclosure and Transparency	21
FINANCIAL PERFORMANCE AT A GLANCE	26
FINANCIAL STATEMENT	27

ABOUT US

Bethesda Community Assistance and Relationship Enrichment Centre, also known as Bethesda CARE Centre (BCARE), is a Social Service Agency formed in 1996 with the purpose to express care for the Hougang community through social service and welfare assistance. In 2002, Bethesda Care Centre became a registered charity under the Charities Act (Chapter 37) with Institution of a Public Character status.

With the ongoing relentless effort, the services of Bethesda CARE Centre have expanded to serve the communities in Seng Kang and Punggol.

Mission

To serve the community with commitment and compassion so as to enrich lives, inspire a positive outlook and build resilience in those we serve.

OBJECTIVES

- ❖ To provide community assistance to the poor and underprivileged; to those who are weak and neglected; and to those who are aged or infirmed.
- ❖ To promote and strengthen relationship between parents and children, spouses, teachers and pupils, peers and among inter-generational family members.
- ❖ To enrich the lives of individuals through engaging and meaningful activities and volunteerism.

Core Values

Compassion: We value individuals and families and extend our help to them with empathy, concern and care.

Understanding: We listen to our beneficiaries to understand their needs better so that assistance given can create breakthroughs for them, making their lives easier and happier.

Sincerity: We serve with a caring, positive and creative spirit that enables us to plan meaningful programmes that would address specific needs.

OVERVIEW OF CHARITY

Bethesda Community Assistance and Relationship Enrichment Centre (“Bethesda CARE Centre”) was incorporated as a society on 6 December 1996 and registered as a Charity under the Charities Act (Chapter 37) since 17 May 2002. It has been accorded IPC (Institution of a Public Character) status from 5 September 2019 to 04 March 2022.

Unique Entity Number (UEN)	S96SS0198K
ROS Registration Date ROS Registration Number	6 December 1996 248/1996 WEL
Charity Registration Date Charity Registration Number	17 May 2002 01564
Institute of Public Character Number Validity	IPC000574 5 September 2019 to 4 March 2022
Member of National Council of Social Services	Registration Date: 12 March 2002 Registration No: V00027
Registered Address	Blk 247 Hougang Avenue 3 #01-462 Singapore 530247
Mailing Address	Blk 242 Hougang Street 22 #01-93 Singapore 530242
Bank	OCBC Bank, Hougang Branch
Auditor	Verity Partners

EXECUTIVE DIRECTOR'S MESSAGE

Dear Friends

Greetings from Bethesda CARE Centre (BCare).

2020 has been an extraordinary year that called for extraordinary resilience and love. In a year when everything seems to come to a standstill, BCare's mission to serve the community continued through the unwavering efforts of our dedicated team of staff, interns and volunteers.



Circuit Breaker kicked in just as we entered our new financial year. Onsite programmes had to be put on pause mode and online effort started almost immediately. Weekly calls were made to our existing clients and their caregivers to ensure their mental well-being as well as to keep them updated of the COVID-19 situation and government regulations.

Financial assistance and counselling services continued to be provided for the community. Our team of social workers and counsellors adjusted quickly to the less favoured mode of online assessment and counselling as requests poured in. Counselling case load increased by more than one third as compared to the previous years. We also assisted those who were unsure of their government grant eligibility and the application process.

When all these systems were put in place, we shifted gear to do stock taking for all our programmes. The staff met to review and work on improving the effectiveness of each programme. Plans and ideas, which have been shelved due to lack of time from daily operations previously, were brought to the table. After many brainstorming sessions and research work, the vision became clearer. Better care plans, new curriculums and teaching props were birthed.

Despite it being a challenging year, we have definitely learned and gained from it. We had time to pause from the daily routine and relook at what we have been doing. We were forced to think out of the box due to the limitations. We got to know our clients and the caregivers better when we spent more quality time talking to them one-on-one.

We want to thank our volunteers, donors and community partners for your support during this year. Because you gave of your precious time and finances, we were able to support and serve the less advantaged people in the community.

The year ahead may continue to be challenging to many in the community. I look forward to your continuous partnership so that together, we can bridge more gaps and build more lives.

A handwritten signature in black ink, appearing to read 'Stella Tan', followed by a horizontal line.

Stella Tan
Executive Director

LEADERSHIP

The Board members of Bethesda CARE Centre is governed by the Constitution of the Society and is committed to maintaining a high standard of corporate governance in line with the principles set out in the Code of Governance for Charities and Institutions of Public Character (IPC). This establishes and maintains a high standard of legal and ethical mode of operations to preserve the interests of all donors, beneficiaries and stakeholders.

The following members were elected to the Management Committee for a term of 3 years starting on 1 September 2018 and ending on 30 August 2021 in accordance with the revised Constitution (8th Amendment).

	Name	Current Charity Board Appointment	Occupation
1	Mr Chua Tong Yong	President 1 September 2018 – 31 August 2021	Lawyer
2	Ms Tay Bee Soot	Secretary 1 September 2018 – 31 August 2021 (officially stepped down on 30 June 2021)	Executive Pastor
3	Mr Patrick Wong Yoke Fun	Treasurer 1 September 2018 – 31 August 2021	District Pastor
4	Ms Hui Kam Hoong	Assistant Treasurer 1 September 2018 – 31 August 2021	Pastor
5	Mr Wong Fook Chye	Ordinary Committee Member 1 September 2018 – 31 August 2021	Retiree
6	Ms Kok Kah Wei	Ordinary Committee Member 1 September 2018 – 31 August 2021	Director
7	Dr Desmond Mao Ren Hao	Ordinary Committee Member 1 September 2018 – 31 August 2021	Consultant
8	Ms Carolin Tan Kai Lin	Ordinary Committee Member 1 September 2018 – 31 August 2021	HR Manager
9	Ms Tan Kwee Choon	Ordinary Committee Member 1 September 2018 – 31 August 2021	Pastor
10	Mr Henry Teo Hak Hong	Ordinary Committee Member 1 September 2018 – 31 August 2021	Marketing Director
11	Mr Koh Chia Chee	Ordinary Committee Member 1 September 2018 – 31 August 2021	Director, Corporate Services
12	Dr Nelson Chua Ping Ping	Ordinary Committee Member 1 September 2018 – 31 August 2021	Senior Consultant

Sub-Committees

Audit

Name	Designation
Ms Kok Kah Wei	Chairperson
Dr Desmond Mao Ren Hao *	Member
Ms Lam Jau Yee Vivien *	Member

*Dr Desmond Mao stepped down on 31 December 2020 and Ms Vivien Lam took over in March 2021

Finance

Name	Designation
Ms Tay Bee Soot	Chairperson
Mr Kenneth Chin	Member
Ms Winnie Poon	Member

Programmes & Services

Name	Designation
Mr Wong Fook Chye	Chairperson
Mr Henry Teo Hak Hong	Member
Ms Hui Kam Hoong	Member

Human Resource

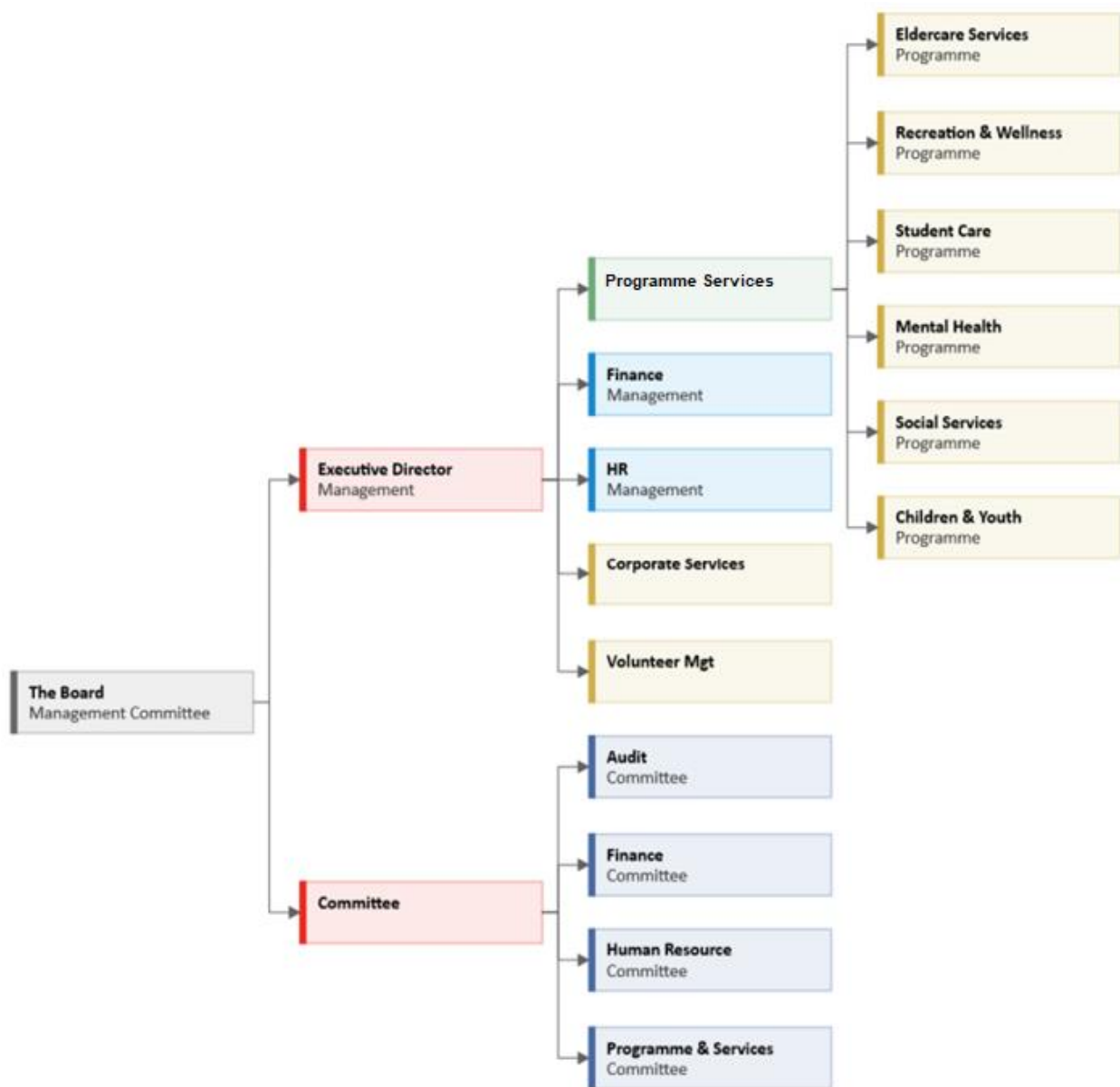
Name	Designation
Mr Koh Chia Chee *	Chairperson
Dr Nelson Chua Ping Ping *	Member / Chairperson
Mr Danny Lee	Member

*Mr Koh Chia Chee stepped down and Dr Nelson Chua took over as Chairperson in January 2021.

Honorary Internal Auditors

Name	Term
Mr Kee Siang Chin	1 January 2017 – 31 December 2020
Ms Elizabeth Phoon	1 May 2019 – 30 April 2023

ORGANISATION STRUCTURE



OUR WORK: PROGRAMME & ACTIVITIES

MENTAL HEALTH & SOCIAL SERVICE

FAME CLUB

NEW NORMAL: Hope for a New Day, New Beginning, New Joy

FAME Club was temporarily closed due to the Circuit Breaker. The lives of its members and their caregivers dramatically changed overnight when everything familiar to them suddenly came to a standstill.

The staff kept the lines of communication open and reassured them by connecting with them through weekly telephone calls. The time spent listening to the members share about their routines at home, concerns, fears, doubts etc. was an opportunity to get to know them better. It was also a platform to provide their caregivers a listening ear and equip them with the necessary self-care and caregiving tips to cope with during this extraordinary challenging time. Amidst the uncertainty, they proved to be resilient and met the challenges head-on each day.

The members emerged from the Circuit Breaker with hope for tomorrow as they happily returned to familiar faces and a revamped FAME Club Programme. They bravely embraced the changes that came as we adhered to the necessary precautionary measures to keep safe during this pandemic.



CNY Celebration 2021

MENTAL HEALTH & SOCIAL SERVICE

Counselling

Total Cases attended to for the year: 66

In view of the COVID-19 restrictions, online platform was adopted as the main mode of counselling. Requests continued to pour in and the overall caseload increased by more than one third. Working with the limitations, our team of counsellors continued steadfastly to give our best to serve those who were in need of a listening ear and help in processing their situation.

Financial Assistance

Cash/Voucher Assistance:

Total No of Clients (Cash/Vouchers): 10

Total Amount Dispensed: \$1,309.00

Milk Powder Assistance:

Total No of Clients: 15 families of 20 children

Total Amount Dispensed: \$5,369.80

Besides providing cash and supermarket vouchers, we have also been providing milk powder to children 12 years and below from low-income families. We are now into our third year of 'Milk Powder Assistance' programme. With the continuation of funding received from Lee Foundation, we have also started providing diapers as part of the assistance to these families from Jan 2021.

ELDERCARE

SENIOR ACTIVITY CENTRE (SAC)

Total Membership: 204 (Age 55 and above)

With the commencement of circuit breaker, all activities were curtailed to bare minimum with most interactions done on the online platform. The staff continued to man the Alert Alarm System at the centre daily to serve the residents in case of emergencies.

The seniors were glad to be back when we reopened to small groups based on time slots. Despite not being able to be involved in group activities, they were glad that they had a place to go to and people to chat with. We have observed that there is a decline to their physical and mental state during the circuit breaker. With the further relaxation of restrictions, we conducted line dancing and gardening lessons for the seniors. We also partnered with Health Promotion Board to run health talks and Individual Physical Proficiency Test for the seniors.

Highlights:

- Mobile Clinic offering free flu inoculations for the seniors (sponsored by RSVP) on 11 August
- Free hair cutting by Red Cross on 24 August
- Lantern Colouring with materials supplied by Gardens by the Bay in September. The completed lanterns were displayed at Gardens by the Bay
- Outing to view Christmas lightings on Orchard Road in groups of 5 on 9 December
- Virtual Therapy by Dancing Minds to counter cognitive declination
- Online intergenerational programmes with My First Skool and Compassvale Secondary
- Digital education - SgGo Digital for Seniors by IDMA

ELDERCARE

ELDERCARE BEFRIENDERS

Our passionate and dedicated volunteers have remained a friendly, positive and comforting source of encouragement to the elderly during the pandemic. The good rapport that they have built with the elderly over the years has certainly been an advantage. It had made it a little easier to connect with them remotely as per the required safe management measures. Thankfully, the elderly in our care have remained well with no urgent intervention required.

We have experienced challenges in sustaining this mode of communication this past year as the elderly still prefer the personal connection and warmth that comes from a home visit. Home visits are also especially beneficial to those suffering from dementia.

We are also grateful for the collaboration with the North East CDC to distribute Care Packs to the elderly.

CHILDREN, YOUTH & FAMILY

Joy Connection Student Care Centre

Average Number of Students per Month: 52

The Centre was closed from 8 April 2020 to 1 June 2020 during the Circuit Breaker. Staff continued to stay in touch with students and parents during this period by making regular phone calls to them. Besides providing a listening ear, parenting tips were shared with those who had difficulties managing their children during this period.

The centre reopened our doors in June after much planning and preparation work to adhere to the safe management measures issued by MSF. We thank God that we passed with full marks for the spot check conducted by the MSF officer in July.

From later part of 2020 onwards, we were able to provide more activities for the students such as Tuition, Piano and Art classes. We also had students from Paya Lebar Methodist Girls School (Secondary) who planned recorded lessons for the students with activities like quiz, games, story-telling and craft, etc.

PRE-SCHOOL OUTREACH (PSO)

Total Number of Cases served for 2020: 249

Pre-school Outreach is a programme by ECDA to reach out to pre-schoolers from lower-income families who are not registered with any preschools.

BCARE is one of the 6 PSO Programme service providers appointed by the Early Childhood Development Agency (ECDA) since 2018. We were into our second year of the programme. Through this programme, BCARE conducts outreach visits to low income families with the aim of reducing the percentage of children entering Primary One without any form of pre-school education.

Apart from raising awareness of the value of pre-school education, the PSO programme also assists families in enrolling their children into pre-school as well as supporting the families so that their children will be able to maintain their regular attendance in school.

Through this programme, we have also identified and assisted some families with other areas of needs.

CHILDREN, YOUTH & FAMILY

Tuition Programme

Total Number of Tutors: 21

Total Number of Students: 27

When Circuit Breaker came into effect in April 2020 and schools across Singapore closed during the month of April and May, BCARE tuition programme followed the government's move and cancelled its classes during that period. We then switched to having classes online from June onwards. In mid-July, some classes resumed in the centre while some classes continue to be conducted online till October.

It was a challenging period as everyone navigated the effects brought about by COVID-19 in Singapore. None of our tutors had any prior experience in conducting online classes and they all had to slowly pick up the necessary skills required to conduct an online class. Everyone persevered on despite this because of their passion in teaching our students. We truly appreciate the effort that our tutors have put in for our students. One P6 boy even got top in English for his level!

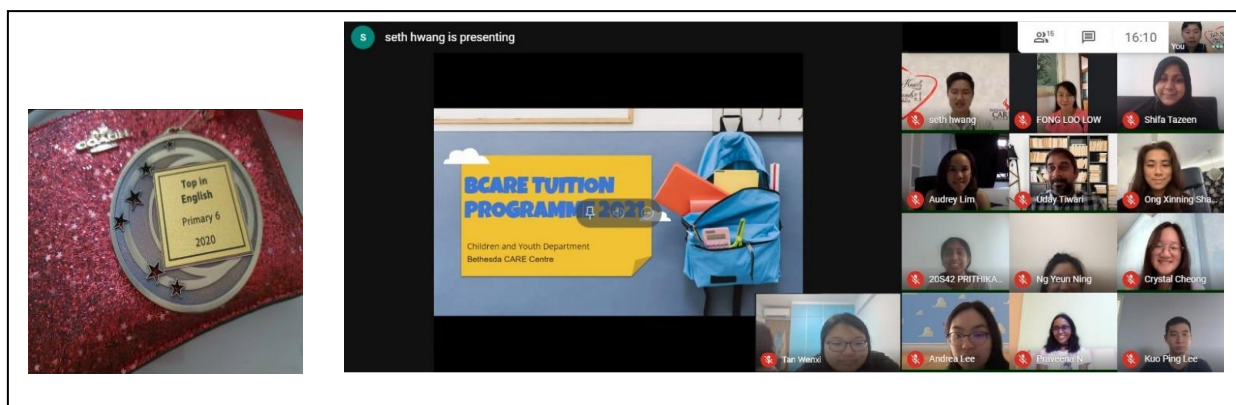
Highlights:

8 December 2020: Year-End Review Session with Tutors

During our year-end review session with our tutors, we found that tutors generally had a sense of fulfilment volunteering with us. They enjoyed teaching our students and felt supported by BCARE throughout their volunteering journey. As being a tutor requires lots of time and effort, we even got tutors to send a word of encouragement to the tutors who will be joining us in January 2021.

9 January 2021: Tutors Orientation Programme

12 tutors, both current and new, came together during our Tutors Orientation Programme to get to know one another and to receive tips on how they can conduct their classes. Apart from learning how to work with children from low-income families, they also received a better understanding of what it means to be a tutor at BCARE. It was a great start to our academic year and we look forward to seeing how our tutors impact 23 students who are beneficiaries in our programme.



CHILDREN, YOUTH & FAMILY

Royal Rangers Outpost 22

Average Attendance: 70

Due to Circuit Breaker, RR proceeded to run our weekly program online. Commander established a 'post and learn' methodology to allow our usual 'Hands-on' activities to proceed.

Highlights:

Small Group Outings

August	Cycling at Punggol Park As part of their cycling merit requirement, the AR rangers had to complete a bicycle safety and trail.
September	Makan with Senior Commander To strengthen the bond, Commanders gathered in small groups to have a meal with the senior commander.
October	Children's Day Outing
February	Outing to Lorong Buangkok / Admiralty Park / Jacob Ballas Garden

Online Events

August	National Day Celebration We invited the entire family of our rangers to join in on event day as well as to organize a banner competition. We aim to celebrate the importance of family, so we run a simple 'Love language' and family activity to promote togetherness.
January	Orientation Besides welcoming everyone, we also took the opportunity to hear from the parents and rangers to understand activities that they will like to see happening in RR.

Other Events

November	Council of Achievement We brought the award presentation to the homes of the rangers and celebrated it with the rangers at their doorstep. In total, commanders delivered to 58 homes and 100 plus rangers.
	Annual Planning The annual meeting is where the commanders gather to evaluate the 2020 and make plans for the year of 2021.
	RR National Leaders Council Chaired by the National Commander of Singapore, leaders from the various outposts gathered to pray and plan for the direction ahead.
February	Commanders initiated a giving back activity in which items are packed to 55 hampers and were delivered to Thye Hua Kwan Nursing Home, Hougang

CHILDREN, YOUTH & FAMILY

FamFun

With the COVID- 19 restrictions, we were unable to conduct our regular outings for families with young children. Together with our dedicated team of volunteers, we conducted an online parenting course for parents with children aged 3 to 10. There were a total of 22 participants. The course, developed by Nicky and Sila Lee, co-authors of The Marriage Book and The Parenting Book, equipped parents with necessary skills to build strong relationships with their children, setting boundaries, knowing their love languages etc. It was very well-received by the participants and we will continue to run more courses online.

RECREATION & WELLNESS

GYM

Average Number of Users per Day: 20

The gym was reopened with new measures put in place after several months of closure. The number of users allowed had to be limited according to the regulations. Fixed time slot of one-and-a-half hour per use was introduced.

Traditional Chinese Medicine (TCM)

Average treatment per month: 40

We saw a drop in patients when TCM resumed after the Circuit Breaker. Majority of the patients are elderly with pain issues and people with sports injury.

THE YEAR AHEAD

Senior Activity Centre

On 1 Feb 2021, Ministry of Health has appointed BCARE SAC as one of the anchor operators to provide a new “Eldercare Centre Baseline Service” to seniors 60 years and above regardless of their housing type. We have embarked on the transition stage and new blocks have been assigned to us. BCARE SAC will gradually reach out to the bigger pool of seniors as assigned by MOH, pre-emptively identify their needs and provide the necessary support. Besides befriending and buddying, we will also conduct active ageing programmes to engage seniors in a holistic manner. In addition, we will work closely with the other helping agencies in the region to better support any other areas of need faced by the seniors.

FAME Club

We have reviewed our programme and will moving on to a more interventive measure to help them improve in their cognitive behaviour. We have designed a holistic curriculum to help the members process and work on their self-esteem and self-worth. The sessions, presented through experiential learning, arts and music, are aimed at helping them develop a better sense of identity and the need to take care of themselves. We have also devised board games to make the lessons more interesting and less intimidating. New measuring tools are also constructed to help in mapping the personal care plan for each member.

Children & Youth Programme

After a long pause, we will be revisiting programmes and services for the children and youth. Besides the tuition programme that we are currently running for Primary School children, we are also starting a Reading Program for pre-schoolers to help them get a good start on their English Language proficiency. We will be setting up a drop-in centre for the children and youth, providing them a safe environment to study and play, as well as to share any challenges they may be facing. More mental health programmes, both school-based as well as centre-based, are also in the pipeline.

GOVERNANCE

Board Meetings and Attendance

A total of 4 board meetings were held in the period 1 April 2020 – 31 March 2021 with the following attendance:

Board Member	Attendance
Mr Chua Tong Yong *	3 / 4
Ms Tay Bee Soot	4 / 4
Mr Patrick Wong Yoke Fun*	3 / 4
Ms Hui Kam Hoong	4 / 4
Mr Wong Fook Chye	4 / 4
Ms Kok Kah Wei	4 / 4
Dr Desmond Mao Ren Hao*	1 / 4
Ms Carolin Tan Kai Lin	4 / 4
Ms Tan Kwee Choon	4 / 4
Mr Henry Teo Hak Hong*	3 / 4
Mr Koh Chia Chee (Chris)*	3 / 4
Dr Nelson Chua Ping Ping	4 / 4

* On leave with Board approval.

GOVERNANCE

Disclosure of Remuneration and Benefits Received by Board

1. **No** Board members receive any remuneration.
2. **No** staff is involved in setting his or her own remuneration. None of the paid staff receives more than \$100,000 in annual remuneration.
3. There is **no** paid staff, being a close member of the family belonging to the Executive Head or a governing board member of the Society, who has received remuneration exceeding \$50,000 during the financial year.
4. The President Mr Chua Tong Yong and Board committee members Mr Wong Fook Chye and Ms Tan Kai Lin Carolin have served in the Board for more than 10 consecutive years. Mr Chua serves as a day to day consultant to the Society's Executive Director and staff. Mr Wong is the chairperson of the Programme & Services Sub-committee. Ms Tan serves as the HR Executive (volunteer with no remuneration) of BCare.
The Board approved their continued service in the committee for an indefinite period for as long as they are still available to serve and able to contribute effectively in the committee.
5. The Society maintains a reserve equivalent to **1.5** times the annual operating expenditure to ensure adequacy of financial provision on continuity of programmes and services provided. The documented reserve and investment policy is reviewed yearly by the Board.
6. The Society's principal funding sources are from donations and government grants.
7. The Board has appointed Mr Kee Siang Chin and Ms Elizabeth Phoon as Honorary Internal Auditors.
8. The President Mr Chua Tong Yong has a share and is a director of E.Q. Management Services Pte Ltd. E.Q. Management Services Pte Ltd handles payroll matters of BCare.

GOVERNANCE

Conflict of Interest

All Board members and staff are required to comply with the Charity's conflict of interest policy. The Board has put in place documented procedures for Board members and staff to declare actual or potential conflicts of interests on a need-to basis.

All new Board members and staff are required to complete the conflict of interest declaration form upon hiring, appointment or election to the Board as an acknowledgement of having understood the policy and that he/she will fully disclose to the Board when a conflict of interest situation directly or indirectly arises. For example, the Committee member concerned should not participate in the discussion or vote on the matter and should also offer to withdraw from the meeting and the Committee shall decide if this should be accepted.

Whistle-Blowing Policy

We are committed to maintaining a high standard of compliance with accounting, financial reporting, internal controls and auditing requirements, and any legislation. In line with this commitment, our Charity has put in place, a whistle-blowing policy to address concerns about possible wrong-doing or improprieties in financial or other matters within our Charity. A copy is made available on our corporate website.

Whistle Blowing Policy aims to provide an avenue for employees, clients and stakeholders to raise concerns and offer reassurance that they will be protected from reprisals or victimisation for whistle blowing in good faith.

Social Media Policy

Our charity has also put in place the Social Media policy as a guiding principle for users acting on behalf of our Charity when using social media, or any form of electronic communication or application that enables them to create online communities to share knowledge, opinions, media, and private and public messages. This policy also applies to personal use of the social media when referencing our Charity.

COMPLIANCE

S/N	Code Guidelines	Code ID	Response (select whichever is applicable)
Board Governance			
1	Induction and orientation are provided to incoming governing board members upon joining the Board.	1.1.2	Complied
	Are there governing board members holding staff¹ appointments? (skip items 2 and 3 if “No”)		No
2	Staff does not chair the Board and does not comprise more than one third of the Board.	1.1.3	
3	There are written job descriptions for the staff’s executive functions and operational duties, which are distinct from the staff’s Board role.	1.1.5	
4	<p>The Treasurer of the charity (or any person holding an equivalent position in the charity, e.g. Finance Committee Chairman or a governing board member responsible for overseeing the finances of the charity) can only serve a maximum of 4 consecutive years.</p> <p>If the charity has not appointed any governing board member to oversee its finances, it will be presumed that the Chairman oversees the finances of the charity.</p>	1.1.7	Complied
5	All governing board members must submit themselves for re-nomination and re-appointment , at least once every 3 years.	1.1.8	Complied
6	The Board conducts self-evaluation to assess its performance and effectiveness once during its term or every 3 years, whichever is shorter.	1.1.12	Complied
	Is there any governing board member who has served for more than 10 consecutive years? (skip item 7 if “No”)		Yes

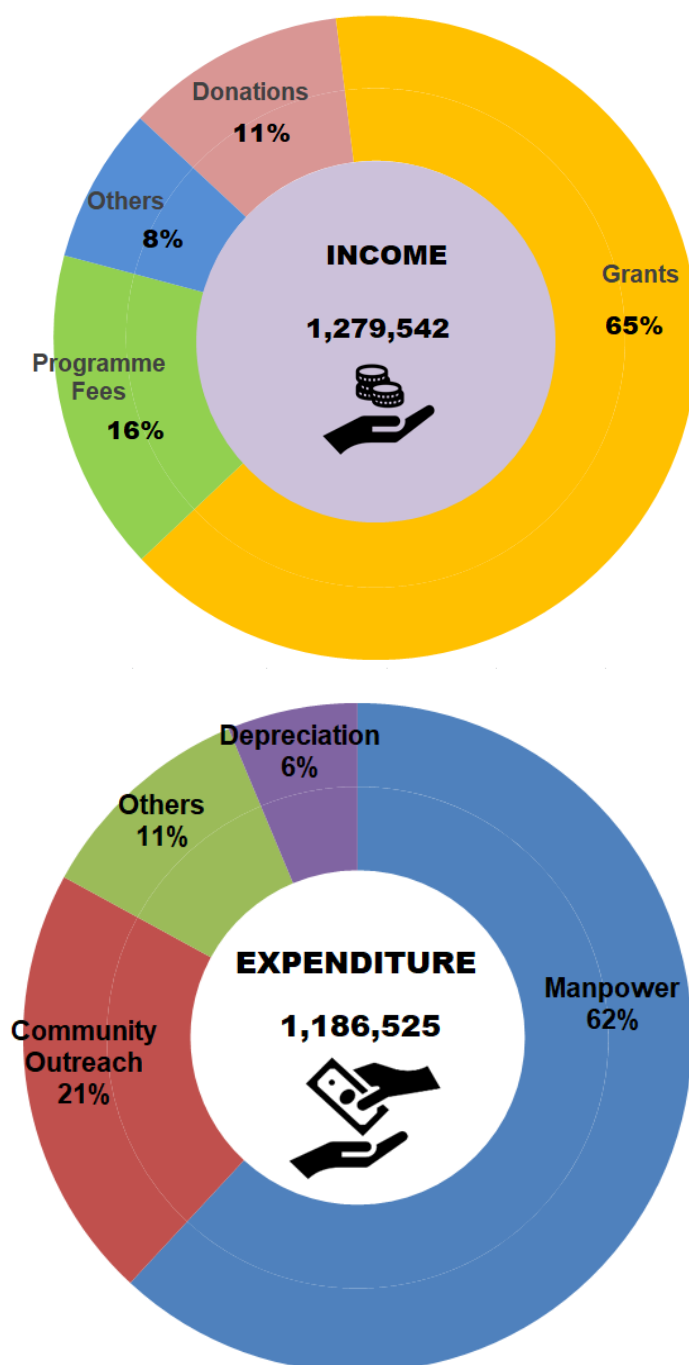
7	The charity discloses in its annual report the reasons for retaining the governing board member who has served for more than 10 consecutive years.	1.1.13	Complied
8	There are documented terms of reference for the Board and each of its committees.	1.2.1	Complied
Conflict of Interest			
9	There are documented procedures for governing board members and staff to declare actual or potential conflicts of interest to the Board at the earliest opportunity.	2.1	Complied
10	Governing board members do not vote or participate in decision making on matters where they have a conflict of interest.	2.4	Complied
Strategic Planning			
11	The Board periodically reviews and approves the strategic plan for the charity to ensure that the charity's activities are in line with the charity's objectives.	3.2.2	Complied
Human Resource and Volunteer² Management			
12	The Board approves documented human resource policies for staff.	5.1	Complied
13	There is a documented Code of Conduct for governing board members, staff and volunteers (where applicable) which is approved by the Board.	5.3	Complied
14	There are processes for regular supervision, appraisal and professional development of staff.	5.5	Complied
	Are there volunteers serving in the charity? (skip item 15 if "No")		Yes
15	There are volunteer management policies in place for volunteers.	5.7	Complied

Financial Management and Internal Controls			
16	There is a documented policy to seek the Board's approval for any loans, donations, grants or financial assistance provided by the charity which are not part of the charity's core charitable programmes.	6.1.1	Complied
17	The Board ensures that internal controls for financial matters in key areas are in place with documented procedures .	6.1.2	Complied
18	The Board ensures that reviews on the charity's internal controls, processes, key programmes and events are regularly conducted.	6.1.3	Complied
19	The Board ensures that there is a process to identify, and regularly monitor and review the charity's key risks .	6.1.4	Complied
20	The Board approves an annual budget for the charity's plans and regularly monitors the charity's expenditure.	6.2.1	Complied
	Does the charity invest its reserves (e.g. in fixed deposits)? (skip item 21 if "No")		Yes
21	The charity has a documented investment policy approved by the Board.	6.4.3	Complied
Fundraising Practices			
	Did the charity receive cash donations (solicited or unsolicited) during the financial year? (skip item 22 if "No")		Yes
22	All collections received (solicited or unsolicited) are properly accounted for and promptly deposited by the charity.	7.2.2	Complied
	Did the charity receive donations in kind during the financial year? (skip item 23 if "No")		Yes
23	All donations in kind received are properly recorded and accounted for by the charity.	7.2.3	Complied

Disclosure and Transparency			
24	The charity discloses in its annual report — (a) the number of Board meetings in the financial year; and (b) the attendance of every governing board member at those meetings.	8.2	Complied
	Are governing board members remunerated for their services to the Board? (skip items 25 and 26 if “No”)		No
25	No governing board member is involved in setting his own remuneration.	2.2	
26	The charity discloses the exact remuneration and benefits received by each governing board member in its annual report. <u>OR</u> The charity discloses that no governing board member is remunerated.	8.3	
	Does the charity employ paid staff? (skip items 27, 28 and 29 if “No”)		Yes
27	No staff is involved in setting his own remuneration.	2.2	Complied
28	The charity discloses in its annual report — (a) the total annual remuneration for each of its 3 highest paid staff who each has received remuneration (including remuneration received from the charity’s subsidiaries) exceeding \$100,000 during the financial year; and (b) whether any of the 3 highest paid staff also serves as a governing board member of the charity. The information relating to the remuneration of the staff must be presented in bands of \$100,000. <u>OR</u> The charity discloses that none of its paid staff receives more than \$100,000 each in annual remuneration.	8.4	Complied

29	<p>The charity discloses the number of paid staff who satisfies all of the following criteria:</p> <p>(a) the staff is a close member of the family³ belonging to the Executive Head⁴ or a governing board member of the charity;</p> <p>(b) the staff has received remuneration exceeding \$50,000 during the financial year.</p> <p>The information relating to the remuneration of the staff must be presented in bands of \$100,000.</p> <p>OR</p> <p>The charity discloses that there is no paid staff, being a close member of the family belonging to the Executive Head or a governing board member of the charity, who has received remuneration exceeding \$50,000 during the financial year.</p>	8.5	Complied
Public Image			
30	<p>The charity has a documented communication policy on the release of information about the charity and its activities across all media platforms.</p>	9.2	Complied

FINANCIAL PERFORMANCE AT A GLANCE



Please refer to the Financial Statements on our <https://www.bcare.org.sg/about-us/financial-information/>

BETHESDA COMMUNITY ASSISTANCE AND RELATIONSHIP ENRICHMENT CENTRE
(Registered in the Republic of Singapore)
Unique Entity No. S96SS0198K

STATEMENT BY MANAGEMENT COMMITTEE AND AUDITED FINANCIAL STATEMENTS
FOR THE FINANCIAL YEAR ENDED 31 MARCH 2021

BETHESDA COMMUNITY ASSISTANCE AND RELATIONSHIP ENRICHMENT CENTRE
(Registered in the Republic of Singapore)
Unique Entity No. S96SS0198K

INDEX

	PAGE NO.
Statement by Management Committee	1
Independent Auditor's Report	2 - 5
Statement of Financial Position	6
Statement of Comprehensive Income	7
Statement of Changes in Funds	8
Statement of Cash Flows	9
Notes to the Financial Statements	10 - 39

BETHESDA COMMUNITY ASSISTANCE AND RELATIONSHIP ENRICHMENT CENTRE
(Registered in the Republic of Singapore)

STATEMENT BY MANAGEMENT COMMITTEE

We, **CHUA TONG YONG** and **PATRICK WONG YOKE FUN**, state that, in our opinion:

- (a) the accompanying statement of financial position, statement of comprehensive income, statement of changes in funds, statement of cash flows and the notes to the financial statements, including a summary of significant accounting policies thereon, as set out on pages 6 to 39 are drawn up so as to give a true and fair view of the financial position of the Society as at 31 March 2021 and the financial performance, changes in funds and cash flows of the Society for the financial year then ended;
- (b) the use of the donation moneys was in accordance with the objectives of the Society as required under Regulation 11 of the Charities (Institutions of a Public Character) Regulations; and
- (c) the Society has complied with the requirements of Regulation 15 of the Charities (Institutions of a Public Character) Regulations.

The Management Committee has, on the date of this statement, authorised these financial statements for issue.

On behalf of the Management Committee



.....
CHUA TONG YONG
President



.....
PATRICK WONG YOKE FUN
Treasurer

DATED: 10 AUGUST 2021

**INDEPENDENT AUDITOR'S REPORT TO THE MEMBERS OF
BETHESDA COMMUNITY ASSISTANCE AND RELATIONSHIP ENRICHMENT CENTRE
Unique Entity No. S96SS0198K**

Report on the Audit of the Financial Statements

Opinion

We have audited the financial statements of BETHESDA COMMUNITY ASSISTANCE AND RELATIONSHIP ENRICHMENT CENTRE (the Society), which comprise the statement of financial position as at 31 March 2021, and the statement of comprehensive income, statement of changes in funds and statement of cash flows for the financial year then ended, and notes to the financial statements, including a summary of significant accounting policies, as set out on pages 6 to 39.

In our opinion, the accompanying financial statements are properly drawn up in accordance with the provisions of the Singapore Societies Act, Chapter 311 (the Societies Act), Singapore Charities Act Chapter 37 and other relevant regulations (the Charities Act and Regulations) and Financial Reporting Standards in Singapore (FRS) so as to give a true and fair view of the financial position of the Society as at 31 March 2021 and the financial performance, changes in funds and cash flows of the Society for the financial year ended on that date.

Basis for Opinion

We conducted our audit in accordance with Singapore Standards on Auditing (SSAs). Our responsibilities under those standards are further described in the *Auditor's Responsibilities for the Audit of the Financial Statements* section of our report. We are independent of the Society in accordance with the Accounting and Corporate Regulatory Authority (ACRA) *Code of Professional Conduct and Ethics for Public Accountants and Accounting Entities* (ACRA Code) together with the ethical requirements that are relevant to our audit of the financial statements in Singapore, and we have fulfilled our other ethical responsibilities in accordance with these requirements and the ACRA Code. We believe that the audit evidence we have obtained is sufficient and appropriate to provide a basis for our opinion.

Other Information

Management is responsible for the other information. The other information comprises the information included in the Annual Report, but does not include the financial statements and our auditor's report thereon. The Annual Report is expected to be made available to us after the date of this auditor's report.

Our opinion on the financial statements does not cover the other information and we do not express any form of assurance conclusion thereon.

**INDEPENDENT AUDITOR'S REPORT TO THE MEMBERS OF
BETHESDA COMMUNITY ASSISTANCE AND RELATIONSHIP ENRICHMENT CENTRE
Unique Entity No. S96SS0198K**

Other Information (continue)

In connection with our audit of the financial statements, our responsibility is to read the other information and, in doing so, consider whether the other information is materially inconsistent with the financial statements or our knowledge obtained in the audit or otherwise appears to be materially misstated. When we read the Annual Report, if we conclude that there is a material misstatement therein, we are required to communicate the matter to those charged with governance and the appropriate action in accordance with SSAs.

Responsibilities of Management and Those Charged with Governance for the Financial Statements

Management is responsible for the preparation of financial statements that give a true and fair view in accordance with the provisions of the Societies Act, the Charities Act and Regulations and FRS, and for devising and maintaining a system of internal accounting controls sufficient to provide a reasonable assurance that assets are safeguarded against loss from unauthorised use or disposition; and transactions are properly authorised and that they are recorded as necessary to permit the preparation of true and fair financial statements and to maintain accountability of assets.

In preparing the financial statements, management is responsible for assessing the Society's ability to continue as a going concern, disclosing, as applicable, matters related to going concern and using the going concern basis of accounting unless management either intends to liquidate the Society or to cease operations, or has no realistic alternative but to do so.

Those charged with governance are responsible for overseeing the Society's financial reporting process.

Auditor's Responsibilities for the Audit of the Financial Statements

Our objectives are to obtain reasonable assurance about whether the financial statements as a whole are free from material misstatement, whether due to fraud or error, and to issue an auditor's report that includes our opinion. Reasonable assurance is a high level of assurance, but is not a guarantee that an audit conducted in accordance with SSAs will always detect a material misstatement when it exists. Misstatements can arise from fraud or error and are considered material if, individually or in the aggregate, they could reasonably be expected to influence the economic decisions of users taken on the basis of these financial statements.

**INDEPENDENT AUDITOR'S REPORT TO THE MEMBERS OF
BETHESDA COMMUNITY ASSISTANCE AND RELATIONSHIP ENRICHMENT CENTRE
Unique Entity No. S96SS0198K**

Auditor's Responsibilities for the Audit of the Financial Statements (continued)

As part of an audit in accordance with SSAs, we exercise professional judgement and maintain professional scepticism throughout the audit. We also:

- Identify and assess the risks of material misstatement of the financial statements, whether due to fraud or error, design and perform audit procedures responsive to those risks, and obtain audit evidence that is sufficient and appropriate to provide a basis for our opinion. The risk of not detecting a material misstatement resulting from fraud is higher than for one resulting from error, as fraud may involve collusion, forgery, intentional omissions, misrepresentations, or the override of internal control.
- Obtain an understanding of internal control relevant to the audit in order to design audit procedures that are appropriate in the circumstances, but not for the purpose of expressing an opinion on the effectiveness of the Society's internal control.
- Evaluate the appropriateness of accounting policies used and the reasonableness of accounting estimates and related disclosures made by management.
- Conclude on the appropriateness of management's use of the going concern basis of accounting and, based on the audit evidence obtained, whether a material uncertainty exists related to events or conditions that may cast significant doubt on the Society's ability to continue as a going concern. If we conclude that a material uncertainty exists, we are required to draw attention in our auditor's report to the related disclosures in the financial statements or, if such disclosures are inadequate, to modify our opinion. Our conclusions are based on the audit evidence obtained up to the date of our auditor's report. However, future events or conditions may cause the Society to cease to continue as a going concern.
- Evaluate the overall presentation, structure and content of the financial statements, including the disclosures, and whether the financial statements represent the underlying transactions and events in a manner that achieves fair presentation.

We communicate with those charged with governance regarding, among other matters, the planned scope and timing of the audit and significant audit findings, including any significant deficiencies in internal control that we identify during our audit.

VERITY PARTNERS

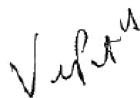
**INDEPENDENT AUDITOR'S REPORT TO THE MEMBERS OF
BETHESDA COMMUNITY ASSISTANCE AND RELATIONSHIP ENRICHMENT CENTRE
Unique Entity No. S96SS0198K**

Report on Other Legal and Regulatory Requirements

In our opinion, the accounting and other records required to be kept by the Society have been properly kept in accordance with the provisions of the Societies Regulations enacted under the Societies Act, the Charities Act and Regulations.

During the course of our audit, nothing has come to our attention that causes us to believe that during the year:

- (a) the Society has not used the donation moneys in accordance with its objectives as required under Regulation 11 of the Charities (Institutions of a Public Character) Regulations; and
- (b) the Society has not complied with the requirements of Regulation 15 of the Charities (Institutions of a Public Character) Regulations.



VERITY PARTNERS
Public Accountants and
Chartered Accountants
Singapore

DATED: 10 AUGUST 2021

BETHESDA COMMUNITY ASSISTANCE AND RELATIONSHIP ENRICHMENT CENTRE
(Registered in the Republic of Singapore)

STATEMENT OF FINANCIAL POSITION
AS AT 31 MARCH 2021

	Note	2021 S\$	2020 S\$
ASSETS			
Non-current assets			
Property and equipment	5	1,963,352	1,585,745
Investment property	7	-	372,933
		<u>1,963,352</u>	<u>1,958,678</u>
Current assets			
Trade receivables		1,604	15,352
Other receivables	8	35,732	32,443
Cash and cash equivalents	9	1,842,686	1,547,901
		<u>1,880,022</u>	<u>1,595,696</u>
TOTAL ASSETS		<u><u>3,843,374</u></u>	<u><u>3,554,374</u></u>
FUNDS AND LIABILITIES			
Funds			
Accumulated funds		<u>2,259,658</u>	<u>2,088,445</u>
Non-current liabilities			
Lease liabilities	10	<u>63,947</u>	<u>-</u>
Current liabilities			
Trade payables		4,208	1,467
Other payables and accruals	11	216,409	143,424
Government grant -			
Care and Share Matching Grant	12	1,270,688	1,300,779
Lease liabilities	10	<u>28,464</u>	<u>20,259</u>
		<u>1,519,769</u>	<u>1,465,929</u>
TOTAL FUNDS AND LIABILITIES		<u><u>3,843,374</u></u>	<u><u>3,554,374</u></u>

The accompanying notes form an integral part of the financial statements.

BETHESDA COMMUNITY ASSISTANCE AND RELATIONSHIP ENRICHMENT CENTRE
(Registered in the Republic of Singapore)

STATEMENT OF COMPREHENSIVE INCOME
FOR THE FINANCIAL YEAR ENDED 31 MARCH 2021

	Note	2021 S\$	2020 S\$
INCOME	13	<u>1,279,543</u>	<u>1,221,373</u>
STAFF COSTS	14	(776,086)	(744,699)
OTHER OPERATING EXPENSES	15	<u>(329,789)</u>	<u>(450,363)</u>
		<u>(1,105,875)</u>	<u>(1,195,062)</u>
SURPLUS FROM OPERATIONS		173,668	26,311
FINANCE COSTS	6	<u>(2,455)</u>	<u>(1,455)</u>
SURPLUS FOR THE YEAR		<u><u>171,213</u></u>	<u><u>24,856</u></u>
TOTAL COMPREHENSIVE INCOME		<u><u>171,213</u></u>	<u><u>24,856</u></u>

The accompanying notes form an integral part of the financial statements.

BETHESDA COMMUNITY ASSISTANCE AND RELATIONSHIP ENRICHMENT CENTRE
(Registered in the Republic of Singapore)

STATEMENT OF CHANGES IN FUNDS
FOR THE FINANCIAL YEAR ENDED 31 MARCH 2021

	Accumulated funds	Total
	S\$	S\$
Balance at 1 April 2020	2,088,445	2,088,445
Total comprehensive income	171,213	171,213
Balance at 31 March 2021	<u>2,259,658</u>	<u>2,259,658</u>

	Accumulated funds	Total
	S\$	S\$
Balance at 1 April 2019	2,063,589	2,063,589
Total comprehensive income	24,856	24,856
Balance at 31 March 2020	<u>2,088,445</u>	<u>2,088,445</u>

The accompanying notes form an integral part of the financial statements.

BETHESDA COMMUNITY ASSISTANCE AND RELATIONSHIP ENRICHMENT CENTRE

(Registered in the Republic of Singapore)

**STATEMENT OF CASH FLOWS
FOR THE FINANCIAL YEAR ENDED 31 MARCH 2021**

	Note	2021 S\$	2020 S\$
CASH FLOWS FROM OPERATING ACTIVITIES			
Surplus for the year		171,213	24,856
Adjustments for:			
Depreciation charges	5 & 7	106,934	102,238
Government grant payable written back	13	-	(27,723)
Interest income	13	(13,002)	(17,625)
Interest expense of lease liability	6	2,455	1,455
Recognition of government grant as income	11 & 12	(96,333)	(150,512)
Rental rebates	17	(12,160)	-
Operating cash flows before working capital changes		159,107	(67,311)
Receivables		477	2,911
Payables		71,301	(8,303)
Net Cash From/(Used In) Operating Activities		230,885	(72,703)
CASH FLOWS FROM INVESTING ACTIVITIES			
Interest received		22,984	9,193
Payments for acquisition of property and equipment	5	(10,294)	(9,455)
Net Cash From/(Used In) Investing Activities		12,690	(262)
CASH FLOWS FROM FINANCING ACTIVITIES			
Payments of lease liability	17	(17,002)	(27,730)
Interest paid		(2,455)	(1,455)
Receipt of government grants		70,667	753,052
Net Cash From Financing Activities		51,210	723,867
Net Increase in Cash and Cash Equivalents		294,785	650,902
CASH AND CASH EQUIVALENTS			
Opening balance		1,547,901	896,999
Closing balance	9	1,842,686	1,547,901

The accompanying notes form an integral part of the financial statements.

BETHESDA COMMUNITY ASSISTANCE AND RELATIONSHIP ENRICHMENT CENTRE
(Registered in the Republic of Singapore)

NOTES TO THE FINANCIAL STATEMENTS, 31 MARCH 2021

These notes form an integral part of and should be read in conjunction with the accompanying financial statements:

1. GENERAL

The financial statements were authorised for issue by the Management Committee on 10 August 2021.

The Society is registered and domiciled in the Republic of Singapore. The Society is registered as a charity under Charities Act (Chapter 37) and an approved Institution of Public Character in accordance with Section 37(a) of the Income Tax Act.

The registered office, which is also the principal place of operations, is located at Block 247, Hougang Ave 3, #01-462, Singapore 530247.

2. SIGNIFICANT ACCOUNTING POLICIES

2.1 Basis of preparation

The financial statements are drawn up in accordance with the the provisions of the Societies Act, Chapter 311 (the Societies Act), Charities Act Chapter 37 and other relevant regulations (the Charities Act and Regulations) and Financial Reporting Standards in Singapore (FRS).

The financial statements are prepared in accordance with the historical cost convention, except as disclosed in the accounting policies below. Historical cost is generally based on the fair value of the consideration given in exchange for assets. Fair value is the price that would be received to sell an asset or paid to transfer a liability in an orderly transaction between market participants at the measurement date. Fair values are categorised into different levels in a fair value hierarchy based on the degree to which the inputs to the measurement are observable and the significance of the inputs to the fair value measurement in its entirety:

- Level 1 fair value measurements are those derived from quoted prices (unadjusted) in active markets for identical assets or liabilities.
- Level 2 fair value measurements are those from inputs other than quoted prices included within Level 1 that are observable for the asset or liability, either directly (i.e. as prices) or indirectly (i.e. derived from prices).
- Level 3 fair value measurements are those from valuation techniques that include inputs for the asset or liability that are not based on observable market data (unobservable inputs).

BETHESDA COMMUNITY ASSISTANCE AND RELATIONSHIP ENRICHMENT CENTRE
(Registered in the Republic of Singapore)

NOTES TO THE FINANCIAL STATEMENTS, 31 MARCH 2021

2. SIGNIFICANT ACCOUNTING POLICIES (CONTINUED)

2.1 Basis of preparation (continued)

Transfers between levels of the fair value hierarchy are recognised by the Society at the end of the reporting period during which the change occurred.

The preparation of financial statements in conformity with FRS requires management to make judgements, estimates and assumptions that affect the application of policies and reported amounts of assets, liabilities, income and expenses. The estimates and associated assumptions are based on historical experience and various other factors that are believed to be reasonable under the circumstances, the results of which form the basis of making judgements about carrying amounts of assets and liabilities that are not readily apparent from other sources.

The estimates and underlying assumptions are reviewed on an ongoing basis. Revisions to accounting estimates are recognised in the period in which the estimate is revised, if the revision only affects that period, or in the period of the revision and future periods, if the revision affects both current and future periods.

Adoption of new and amended standards and interpretations

The accounting policies adopted are consistent with those of the previous financial year except that in the current financial year, the Society has adopted all the new and amended standards which are relevant to the Society and are effective for annual financial periods beginning on or after 1 April 2020. The adoption of these standards did not have any material effect on the financial performance or position of the Society.

The Society has not adopted the following standards applicable to the Society that have been issued but not yet effective:

<u>Description</u>	<u>Effective for annual periods beginning on or after</u>
Amendments to FRS 109 Financial Instruments, FRS 39 Financial Instruments: Recognition and Measurement, FRS 107 Financial Instruments: Disclosures and FRS 116 Leases: Interest Rate Benchmark Reform - Phase 2	1 January 2021
Amendments to FRS 37 Provisions, Contingent Liabilities and Contingent Assets: Onerous Contracts - Cost of Fulfilling a Contract	1 January 2022
Annual Improvements to FRSs 2018-2020	1 January 2022
Amendments to FRS 1 Presentation of Financial Statements: Classification of Liabilities as Current or Non-current	1 January 2023

The management committee expects that the adoption of the standards above will have no material impact on the financial statements in the year of initial application.

BETHESDA COMMUNITY ASSISTANCE AND RELATIONSHIP ENRICHMENT CENTRE
(Registered in the Republic of Singapore)

NOTES TO THE FINANCIAL STATEMENTS, 31 MARCH 2021

2. SIGNIFICANT ACCOUNTING POLICIES (CONTINUED)

2.2 Functional and presentation currency

Items included in the financial statements of the Society are measured using the currency of the primary economic environment in which the Society operates (functional currency). The financial statements are presented in Singapore Dollar (S\$), which is the Society's functional currency.

2.3 Property and equipment

Property and equipment are stated at cost less accumulated depreciation and accumulated impairment losses, if any. Depreciation is calculated on a straight-line basis so as to write-off the cost of the assets over their estimated useful lives, as follows:

Electrical and musical instruments	4 years
Furniture, fittings and office equipment	4 years
Leasehold properties	65 years or lease period of 37 months
Renovation	4 years

The residual values and useful lives of property and equipment are reviewed, and adjusted as appropriate, at the end of the reporting period.

Subsequent expenditure relating to property and equipment that has already been recognised is added to the carrying amount of the asset when it is probable that future economic benefits, in excess of the standard of performance of the asset before the expenditure was made, will flow to the Society and the cost can be reliably measured. Other subsequent expenditure is recognised as an expense during the reporting period in which it is incurred.

On disposal of an item of property and equipment, the difference between the net disposal proceeds and its carrying amount is taken to profit or loss.

2.4 Investment properties

Investment properties are held for long-term rental yields and are not occupied by the Society. They are also properties held for capital appreciation.

The Society applies the Cost Model in determining the carrying amount of investments properties. Investment properties are stated at cost less accumulated depreciation and accumulated impairment losses, if any. Depreciation is calculated on a straight-line basis so as to write-off the cost of the properties over their remaining lease periods of 65 years.

BETHESDA COMMUNITY ASSISTANCE AND RELATIONSHIP ENRICHMENT CENTRE
(Registered in the Republic of Singapore)

NOTES TO THE FINANCIAL STATEMENTS, 31 MARCH 2021

2. SIGNIFICANT ACCOUNTING POLICIES (CONTINUED)

2.4 Investment properties (continued)

On disposal of an investment property, the difference between the net disposal proceeds and the carrying amount is taken to profit or loss.

2.5 Financial assets

Classification and measurement

The Society classifies its financial assets in the following measurement categories:

- Amortised cost;
- Fair value through other comprehensive income (FVOCI); and
- Fair value through profit or loss (FVPL).

The classification depends on the Society's business model for managing the financial assets as well as the contractual terms of the cash flows of the financial asset.

Financial assets with embedded derivatives are considered in their entirety when determining whether their cash flows are solely payment of principal and interest.

The Society reclassifies debt instruments when and only when its business model for managing those assets changes.

At initial recognition

At initial recognition, the Society measures a financial asset at its fair value plus, in the case of a financial asset not at fair value through profit or loss, transaction costs that are directly attributable to the acquisition of the financial asset.

Transaction costs of financial assets carried at fair value through profit or loss are expensed in profit or loss.

BETHESDA COMMUNITY ASSISTANCE AND RELATIONSHIP ENRICHMENT CENTRE
(Registered in the Republic of Singapore)

NOTES TO THE FINANCIAL STATEMENTS, 31 MARCH 2021

2. SIGNIFICANT ACCOUNTING POLICIES (CONTINUED)

2.5 Financial assets (continued)

At subsequent measurement

Debt instruments

Debt instruments of the Society mainly comprise of cash and cash equivalents and trade and other receivables.

There are three subsequent measurement categories, depending on the Society's business model for managing the asset and the cash flow characteristics of the asset.

The Society only has debt instruments at amortised cost.

Amortised cost: Debt instruments that are held for collection of contractual cash flows where those cash flows represent solely payments of principal and interest are measured at amortised cost. A gain or loss on a debt instrument that is subsequently measured at amortised cost and is not part of a hedging relationship is recognised in profit or loss when the asset is derecognised or impaired. Interest income from these financial assets is included in interest income using the effective interest rate method.

Impairment of financial assets

The Society recognises an allowance for expected credit losses (ECLs) for all debt instruments not held at FVPL. ECLs are based on the difference between the contractual cash flows due in accordance with the contract and all the cash flows that the Society expects to receive, discounted at an approximation of the original effective interest rate. The expected cash flows will include cash flows from the sale of collateral held or other credit enhancements that are integral to the contractual terms. ECLs are recognised in two stages. For credit exposures for which there has not been a significant increase in credit risk since initial recognition, ECLs are provided for credit losses that result from default events that are possible within the next 12-months (a 12-month ECL). For those credit exposures for which there has been a significant increase in credit risk since initial recognition, a loss allowance is recognised for credit losses expected over the remaining life of the exposure, irrespective of timing of the default (a lifetime ECL).

For trade receivables, the Society applies a simplified approach in calculating ECLs. Therefore, the Society does not track changes in credit risk, but instead recognises a loss allowance based on lifetime ECLs at the end of the reporting period. The Society has established a provision matrix that is based on its historical credit loss experience, adjusted for forward-looking factors specific to the debtors and the economic environment which could affect debtors' ability to pay.

BETHESDA COMMUNITY ASSISTANCE AND RELATIONSHIP ENRICHMENT CENTRE
(Registered in the Republic of Singapore)

NOTES TO THE FINANCIAL STATEMENTS, 31 MARCH 2021

2. SIGNIFICANT ACCOUNTING POLICIES (CONTINUED)

2.5 Financial assets (continued)

Impairment of financial assets (continued)

The Society considers a financial asset in default when contractual payments are 180 days past due. However, in certain cases, the Society may also consider a financial asset to be in default when internal or external information indicates that the Society is unlikely to receive the outstanding contractual amounts in full before taking into account any credit enhancements held by the Society. A financial asset is written off when there is no reasonable expectation of recovering the contractual cash flows.

Recognition and derecognition

Regular way purchases and sales of financial assets are recognised on trade date - the date on which the Society commits to purchase or sell the asset.

Financial assets are derecognised when the rights to receive cash flows from the financial assets have expired or have been transferred and the Society has transferred substantially all risks and rewards of ownership.

On disposal of a debt instrument, the difference between the carrying amount and the sale proceeds is recognised in profit or loss. Any amount previously recognised in other comprehensive income relating to that asset is reclassified to profit or loss.

2.6 Trade and other receivables

Trade and other receivables are measured at initial recognition at fair value and subsequently at amortised cost using the effective interest rate method less an allowance for any uncollectible amounts.

The carrying amounts of these receivables approximate their fair values as they are subject to normal trade credit terms.

2.7 Cash and cash equivalents

Cash and cash equivalents comprise cash in hand, cash at bank and unpledged fixed deposits.

The carrying amounts of cash and cash equivalents approximate their fair values due to the short-term nature of these balances.

BETHESDA COMMUNITY ASSISTANCE AND RELATIONSHIP ENRICHMENT CENTRE
(Registered in the Republic of Singapore)

NOTES TO THE FINANCIAL STATEMENTS, 31 MARCH 2021

2. SIGNIFICANT ACCOUNTING POLICIES (CONTINUED)

2.8 Financial liabilities

The Society classifies its financial liabilities in the following categories: (a) financial liabilities at fair value through profit or loss; and (b) financial liabilities at amortised cost.

Financial liabilities are classified as financial liabilities at fair value through profit or loss if they are incurred for the purpose of short-term repurchasing (held for trading) or designated by management on initial recognition (designated under the fair value option). The Society does not have any financial liabilities classified at fair value through profit or loss at the end of the reporting period.

Financial liabilities are recognised on the statement of financial position when, and only when, the Society becomes a party to the contractual provisions of the financial instrument.

Financial liabilities are recognised initially at fair value, plus, in the case of financial liabilities other than derivatives, directly attributable transactions costs.

Subsequent to initial recognition, all financial liabilities are measured at amortised cost using the effective interest rate method, except for derivatives, which are measured at fair value.

A financial liability is derecognised when the obligation under the liability is extinguished. For financial liabilities other than derivatives, gains and losses are recognised in profit or loss when the liabilities are derecognised. Net gains or losses on derivatives include exchange differences.

2.9 Trade and other payables

The carrying amounts of these payables approximate their fair values as they are subject to normal trade credit terms.

2.10 Related party

Related party is a Society in which certain committee members have significant influence.

Trading transactions with the related party are carried out in the normal course of business based on terms agreed between the parties.

BETHESDA COMMUNITY ASSISTANCE AND RELATIONSHIP ENRICHMENT CENTRE
(Registered in the Republic of Singapore)

NOTES TO THE FINANCIAL STATEMENTS, 31 MARCH 2021

2. SIGNIFICANT ACCOUNTING POLICIES (CONTINUED)

2.11 Leases

(i) When the Society is the lessee

At the inception of the contract, the Society assesses if the contract contains a lease. A contract contains a lease if the contract convey the right to control the use of an identified asset for a period of time in exchange for consideration. Reassessment is only required when the terms and conditions of the contract are changed.

• Right-of-use assets

The Society recognised a right-of-use asset and lease liability at the date which the underlying asset is available for use. Right-of use assets are measured at cost which comprises the initial measurement of lease liabilities adjusted for any lease payments made at or before the commencement date and lease incentive received. Any initial direct costs that would not have been incurred if the lease had not been obtained are added to the carrying amount of the right-of-use assets.

These right-of-use asset is subsequently depreciated using the straight-line method from the commencement date to the earlier of the end of the useful life of the right-of-use asset or the end of the lease term.

Right-of-use assets (except for those which meets the definition of an investment property) are presented within “Property and equipment”.

Right-of-use asset which meets the definition of an investment property is presented within “Investment properties”.

• Lease liabilities

The initial measurement of lease liability is measured at the present value of the lease payments discounted using the implicit rate in the lease, if the rate can be readily determined.

If that rate cannot be readily determined, the Society shall use its incremental borrowing rate.

BETHESDA COMMUNITY ASSISTANCE AND RELATIONSHIP ENRICHMENT CENTRE
(Registered in the Republic of Singapore)

NOTES TO THE FINANCIAL STATEMENTS, 31 MARCH 2021

2. SIGNIFICANT ACCOUNTING POLICIES (CONTINUED)

2.11 Leases (continued)

Lease payments include the following:

- Fixed payment (including in-substance fixed payments), less any lease incentives receivables;
- Variable lease payment that are based on an index or rate, initially measured using the index or rate as at the commencement date;
- Amount expected to be payable under residual value guarantees
- The exercise price of a purchase option if it is reasonably certain to exercise the option; and
- Payment of penalties for terminating the lease, if the lease term reflects the Society exercising that option.

For contract that contain both lease and non-lease components, the Society allocates the consideration to each lease component on the basis of the relative stand-alone price of the lease and non-lease component. The Society has elected to not separate lease and non-lease component for property leases and account these as one single lease component.

Lease liability is measured at amortised cost using the effective interest method. Lease liability shall be remeasured when:

- There is a change in future lease payments arising from changes in an index or rate;
- There is a changes in the Society's assessment of whether it will exercise an extension option; or
- There are modification in the scope or the consideration of the lease that was not part of the original term.

Lease liability is remeasured with a corresponding adjustment to the right-of-use asset, or is recorded in profit or loss if the carrying amount of the right-of-use asset has been reduced to zero.

- Short term leases and leases of low value assets

The Society has elected to not recognised right-of-use assets and lease liabilities for short-term leases that have lease terms of 12 months or less and leases of low value assets, except for sublease arrangements. Lease payments relating to these leases are expensed to profit or loss on a straight-line basis over the lease term.

BETHESDA COMMUNITY ASSISTANCE AND RELATIONSHIP ENRICHMENT CENTRE
(Registered in the Republic of Singapore)

NOTES TO THE FINANCIAL STATEMENTS, 31 MARCH 2021

2. SIGNIFICANT ACCOUNTING POLICIES (CONTINUED)

2.11 Leases (continued)

(ii) When the Society is the lessor

Leases in which the Society does not transfer substantially all the risks and rewards incidental to ownership of an asset are classified as operating leases. Rental income arising from operating leases on the Society's investment properties is accounted for on a straight-line basis over the lease terms. Initial direct costs incurred in negotiating and arranging an operating lease are added to the carrying amount of the leased asset and recognised over the lease term on the same basis as rental income. Contingent rents are recognised as revenue in the period in which they are earned. Unearned income relating to future period is included in contract liabilities.

2.12 Revenue recognition

Revenue is measured based on the consideration to which the Society expects to be entitled in exchange for transferring promised goods or services to a customer, excluding amounts collected on behalf of third parties.

Revenue is recognised when the Society satisfies a performance obligation by transferring a promised good or service to the customer, which is when the customer obtains control of the good or service. A performance obligation may be satisfied at a point in time or over time. The amount of revenue recognised is the amount allocated to the satisfied performance obligation.

Café sales, food and refreshments

The Society runs a café and provides food and refreshments at its premises. The amount of revenue recognised is based on the selling price. Revenue is recognised at a point in time when the food items and beverages are served to its customers for consumption, either in at its premises or as takeaways.

BETHESDA COMMUNITY ASSISTANCE AND RELATIONSHIP ENRICHMENT CENTRE
(Registered in the Republic of Singapore)

NOTES TO THE FINANCIAL STATEMENTS, 31 MARCH 2021

2. SIGNIFICANT ACCOUNTING POLICIES (CONTINUED)

2.12 Revenue recognition (continued)

Sale of T-shirts, vests and others

The Society runs an after school care center at its premises and sells T-shirts, vests and other apparels to its students. Revenue is recognised at a point in time when the goods are delivered to the students and all criteria for acceptance have been satisfied. The amount of revenue recognised is based on the selling price.

Student care fees

The Society charges fees to its student for its student care services. Revenue is recognised over time, over the periods in which these services are provided.

Registration fees

The Society charges registration fees to its student for its student care services. Revenue is recognised at a point in time when the registration services are rendered.

Holiday program fees

The Society organised programmes and activities for its students. Revenue is recognised at a point in time when the services are provided.

Tuition and course fees

The Society charges fees to its students for its tuition programs and courses. The amount of revenue is recognised over the period in which these services are provided.

Traditional Chinese Medicine (TCM)

The Society runs a TCM clinic at its premises. Revenue is recognised at a point in time when the services are provided.

All other income is recognised when cash are received.

Donation income is recognised on receipts basis.

Interest income is recognised on a time proportion basis using the effective interest rate.

BETHESDA COMMUNITY ASSISTANCE AND RELATIONSHIP ENRICHMENT CENTRE
(Registered in the Republic of Singapore)

NOTES TO THE FINANCIAL STATEMENTS, 31 MARCH 2021

2. SIGNIFICANT ACCOUNTING POLICIES (CONTINUED)

2.13 Employee benefits

As required by law, the Society makes contributions to the Central Provident Fund (CPF). CPF contributions are recognised as compensation expenses in the same period as employment that gives rise to the contributions.

Employee entitlements to annual leave are recognised when they accrue to employees. A provision is made for estimated liability for annual leave as a result of services rendered by employees up to the end of the reporting period.

These expenses are charged to profit or loss as and when they arise and are disclosed as part of staff costs.

2.14 Government grants

Government grants are recognised when there is reasonable assurance that the Society will comply with conditions related to them and that the grants will be received.

Grants related to income are recognised in profit or loss over the periods necessary to match them with the related costs that they are intended to compensate. The timing of such recognition in profit or loss will depend on the fulfillment of any conditions or obligations attached to the grant.

Grants related to assets are presented as liability in the statement of financial position. The profit or loss will be affected by a recognising deferred income in profit or loss systematically over the useful life of the related asset.

2.15 Impairment of non-financial assets

Property and equipment and investment properties are reviewed for impairment whenever there is any indication that these assets may be impaired. If any such indication exists, the recoverable amount (i.e. higher of the cash-generating unit's fair value less cost to sell and value in use) of the asset is estimated to determine the amount of the impairment loss.

BETHESDA COMMUNITY ASSISTANCE AND RELATIONSHIP ENRICHMENT CENTRE
(Registered in the Republic of Singapore)

NOTES TO THE FINANCIAL STATEMENTS, 31 MARCH 2021

2. SIGNIFICANT ACCOUNTING POLICIES (CONTINUED)

2.15 Impairment of non-financial assets (continued)

For the purpose of impairment testing of these assets, recoverable amount is determined on an individual asset basis unless the asset does not generate cash flows that are largely independent of those from other assets. If this is the case, recoverable amount is determined for the cash-generating unit to which the asset belongs to. If the recoverable amount of the asset (or cash-generating unit) is estimated to be less than its carrying amount, the carrying amount of the asset (or cash-generating unit) is reduced to its recoverable amount. The impairment loss is recognised in profit or loss unless the asset is carried at revalue amount, in which case, such impairment loss is treated as a revaluation reserve.

An impairment loss for an asset is reversed if, and only if, there has been a change in the estimates used to determine the asset's recoverable amount since the last impairment loss was recognised. The carrying amount of an asset is increased to its revised recoverable amount, provided that this amount does not exceed the carrying amount that would have been determined (net of amortisation or depreciation) had no impairment loss been recognised for the asset in prior reporting periods. A reversal of impairment loss for an asset is recognised in profit or loss, unless the asset is carried at revalued amount, in which case, such reversal is treated as a revaluation increase.

2.16 Taxation

As a charity, the Society is exempted from income tax under the Income Tax Act, Chapter 134.

BETHESDA COMMUNITY ASSISTANCE AND RELATIONSHIP ENRICHMENT CENTRE
(Registered in the Republic of Singapore)

NOTES TO THE FINANCIAL STATEMENTS, 31 MARCH 2021

3. CRITICAL ACCOUNTING JUDGEMENTS AND KEY SOURCES OF ESTIMATION UNCERTAINTY

Estimates, assumptions and judgements are continually evaluated and are based on historical experience and other factors, including expectations of future events that are believed to be reasonable under the circumstances.

3.1 Critical judgements in applying the Society's accounting policies

The management is of the opinion that any instances of application of judgements are not expected to have a significant effect on the amounts recognised in the financial statements.

3.2 Useful lives of property and equipment and investment properties

The management of the Society determines the estimated useful lives and related depreciation expense for the property and equipment and investment properties. The management of the Society estimates useful lives of the property and equipment and investment properties by reference to expected usage of the property and equipment and investment properties, expected repair and maintenance, and technical or commercial obsolescence arising from changes or improvements in the market. The useful lives and related depreciation expense could change significantly as a result of the changes in these factors.

3.3 Impairment of leasehold properties and investment properties

Leasehold properties and investment properties are reviewed for impairment whenever there is an indication that this asset may be impaired. An assessment is made at the end of the reporting period whether there is any indication that the asset may be impaired. If any such indication exists, the recoverable amount of the asset is estimated to ascertain the amount of impairment loss. This assessment requires significant judgment.

3.4 Allowance for impairment of trade receivables

ECLs are unbiased probability-weighted estimates of credit losses which are determined by evaluating a range of possible outcomes and taking into account past events, current conditions and assessment of future economic conditions.

The Society has used relevant historical information and loss experience to determine the probability of default of the instruments and incorporated forward looking information, including significant changes in external market indicators which involved significant estimates and judgments. The Society's historical credit loss experience and forecast of economic conditions may also not be representative of the customer's actual default in the future.

BETHESDA COMMUNITY ASSISTANCE AND RELATIONSHIP ENRICHMENT CENTRE
(Registered in the Republic of Singapore)

NOTES TO THE FINANCIAL STATEMENTS, 31 MARCH 2021

4. PRINCIPAL ACTIVITIES

The principal activities of the Society are those relating to the promotion of relationship enrichment, and provision of community assistance, pastoral care and counseling to the community.

5. PROPERTY AND EQUIPMENT

	At 01.04.2020	Reclassify from Investment Property (Note 7)	Additions	Disposals	At 31.03.2021
	S\$	S\$	S\$	S\$	S\$
Cost					
Electrical and musical instruments	18,328	-	-	(1,445)	16,883
Furniture, fittings and office equipment	59,180	-	7,083	(4,700)	61,563
Leasehold properties	1,606,618	384,771	101,315	(47,989)	2,044,715
Renovation	180,764	-	3,210	-	183,974
	<u>1,864,890</u>	<u>384,771</u>	<u>111,608</u>	<u>(54,134)</u>	<u>2,307,135</u>
Accumulated depreciation					
Electrical and musical instruments	15,385	-	1,280	(1,445)	15,220
Furniture, fittings and office equipment	52,418	-	4,162	(4,700)	51,880
Leasehold properties	75,380	11,838	61,419	(47,989)	100,648
Renovation	135,962	-	40,073	-	176,035
	<u>279,145</u>	<u>11,838</u>	<u>106,934</u>	<u>(54,134)</u>	<u>343,783</u>

During the reporting period, Right-of-use asset, comprising of leasehold property with cost and accumulated depreciation totalling S\$47,989 and S\$47,989 respectively was written off upon expiry of the lease arrangement.

BETHESDA COMMUNITY ASSISTANCE AND RELATIONSHIP ENRICHMENT CENTRE
(Registered in the Republic of Singapore)

NOTES TO THE FINANCIAL STATEMENTS, 31 MARCH 2021

5. PROPERTY AND EQUIPMENT (CONTINUED)

	At 01.04.2019	Adoption of FRS 116 (Note 21)	Additions	Disposals	At 31.03.2020
	S\$	S\$	S\$	S\$	S\$
Cost					
Electrical and musical instruments	16,791	-	1,537	-	18,328
Furniture, fittings and office equipment	54,712	-	7,918	(3,450)	59,180
Leasehold property	1,558,629	47,989	-	-	1,606,618
Renovation	180,764	-	-	-	180,764
	<u>1,810,896</u>	<u>47,989</u>	<u>9,455</u>	<u>(3,450)</u>	<u>1,864,890</u>
Accumulated depreciation					
Electrical and musical instruments	13,730	-	1,655	-	15,385
Furniture, fittings and office equipment	53,476	-	2,392	(3,450)	52,418
Leasehold property	23,979	-	51,401	-	75,380
Renovation	95,091	-	40,871	-	135,962
	<u>186,276</u>		<u>96,319</u>	<u>(3,450)</u>	<u>279,145</u>
				At 31.03.2021	At 31.03.2020
				S\$	S\$
Carrying amount					
Electrical and musical instruments				1,663	2,943
Furniture, fittings and office equipment				9,683	6,762
Leasehold properties				1,944,067	1,531,238
Renovation				7,939	44,802
				<u>1,963,352</u>	<u>1,585,745</u>

Three members of the Society hold the leasehold property with carrying amount of S\$1,853,705 (2020: S\$1,510,671) in trust for the Society.

BETHESDA COMMUNITY ASSISTANCE AND RELATIONSHIP ENRICHMENT CENTRE
(Registered in the Republic of Singapore)

NOTES TO THE FINANCIAL STATEMENTS, 31 MARCH 2021

5. PROPERTY AND EQUIPMENT (CONTINUED)

During the reporting period, the Society purchased property and equipment through the following arrangements:

	2021	2020
	S\$	S\$
Cash	10,294	9,455
Lease arrangement (Note 17)	101,314	-
	<u>111,608</u>	<u>9,455</u>

6. LEASES

The Society has lease contracts for leasehold properties. The Society's obligations under these leases are secured by the lessor's title to the leased assets. The Society is restricted from assigning and subleasing the leased assets. There are several lease contracts that include extension options which are further discussed below.

The carrying amount of rights-of-use assets classified within property and equipment and the related depreciation charges during the reporting period were as follows:

	2021	2020
	S\$	S\$
Carrying amount		
Leasehold property	<u>90,362</u>	<u>20,567</u>
Depreciation charges		
Leasehold property	<u>31,520</u>	<u>27,422</u>

The carrying amount of lease liabilities and maturity analysis of lease liabilities are disclosed in Note 10.

During the reporting period, interest expenses on leases are charged to profit or loss as follows:

	2021	2020
	S\$	S\$
Interest expense on lease liabilities	<u>2,455</u>	<u>1,455</u>

During the reporting period, total cash outflow for leases as follows:

	2021	2020
	S\$	S\$
Total cash outflows	<u>35,910</u>	<u>53,863</u>

BETHESDA COMMUNITY ASSISTANCE AND RELATIONSHIP ENRICHMENT CENTRE
(Registered in the Republic of Singapore)

NOTES TO THE FINANCIAL STATEMENTS, 31 MARCH 2021

7. INVESTMENT PROPERTY

	At 01.04.2020	Additions	Reclassify to Property and equipment (Note 5)	At 31.03.2021
	S\$	S\$	S\$	S\$
Cost				
Leasehold property	384,771	-	(384,771)	-
Accumulated depreciation				
Leasehold property	11,838	-	(11,838)	-
	At 01.04.2019	Additions	Disposals	At 31.03.2020
	S\$	S\$	S\$	S\$
Cost				
Leasehold property	384,771	-	-	384,771
Accumulated depreciation				
Leasehold property	5,919	5,919	-	11,838
			At 31.03.2021	At 31.03.2020
			S\$	S\$
Carrying amount				
Leasehold property			-	372,933
Fair value			-	330,000

Level 3 fair values of the investment properties have been generally derived using the sales comparison method. Sales prices of comparable properties in close proximity are adjusted for differences in key attributes such as property size. The most significant input into this valuation approach is selling price per square metre.

Three members of the Society hold the investment property in trust for the Society.

During the reporting period, the following amounts are recognised in profit or loss:

	2021 S\$	2020 S\$
Rental income	-	23,700
Direct operating expenses	-	16,438

BETHESDA COMMUNITY ASSISTANCE AND RELATIONSHIP ENRICHMENT CENTRE
(Registered in the Republic of Singapore)

NOTES TO THE FINANCIAL STATEMENTS, 31 MARCH 2021

8. OTHER RECEIVABLES

	2021 S\$	2020 S\$
Deposits	13,757	14,527
Government grant receivable		
- Jobs Support Scheme	15,174	-
Interest receivable	3,751	13,733
Prepayments	3,050	4,183
	<u>35,732</u>	<u>32,443</u>

9. CASH AND CASH EQUIVALENTS

	2021 S\$	2020 S\$
Cash and bank balances	242,686	147,901
Fixed deposits, unpledged	1,600,000	1,400,000
	<u>1,842,686</u>	<u>1,547,901</u>

The effective interest rates of the fixed deposits ranged from 0.45% to 0.50% (2020: 0.80% to 1.80% per annum) at the end of the reporting period.

The maturity periods of the fixed deposits ranged from 5 to 11 (2020: 2 to 5) months from the end of the reporting period.

10. LEASE LIABILITIES

	2021 S\$	2020 S\$
Minimum lease payments due:		
Not later than 1 year	30,472	21,889
Later than 1 year but not later than 5 years	65,657	-
	<u>96,129</u>	<u>21,889</u>
Less:		
Furture charges	(3,718)	(1,630)
Present value of lease liability	92,411	20,259
Shown as current liabilities	28,464	20,259
Shown as non-current liabilities	<u>63,947</u>	<u>-</u>

The effective interest rate of the lease liabilities was 3% (2020: 3%) per annum at the end of the reporting period.

The carrying amount of right-of-use asset under lease liabilities is disclosed in Note 6 to the financial statements.

BETHESDA COMMUNITY ASSISTANCE AND RELATIONSHIP ENRICHMENT CENTRE
(Registered in the Republic of Singapore)

NOTES TO THE FINANCIAL STATEMENTS, 31 MARCH 2021

11. OTHER PAYABLES AND ACCRUALS

	2021 S\$	2020 S\$
Accruals	83,607	38,719
Advances from a related party	-	40,000
Deferred grant income:		
- Enhanced Volunteer Manager Scheme	43,275	-
- Jobs Support Scheme	61,367	-
- Video Consultation Infrastructure Scheme		
Opening balance	-	-
Receipt in current period	5,000	-
Amortised in current period	(1,250)	-
Closing balance	3,750	-
- Others	2,400	-
Government grant - Senior Activity Centre		
Opening balance	45,000	-
Receipt in current period	19,992	60,000
Recognised in profit or loss in current period:		
- Amortisation	(64,992)	(15,000)
Closing balance	-	45,000
Deposits	17,580	19,395
Fees received in advance	4,430	310
	<u>216,409</u>	<u>143,424</u>

The advances from a related party is non-trade related, unsecured, non-interest bearing and will be repayable on demand.

Enhanced Volunteer Manager Funding Scheme is a 2 year manpower support funding scheme which seeks to fund up to 50 Volunteer Managers in Social Service Agencies (SSAs) to strengthen volunteer management capacity, by bringing in Professionals, Managers and Executives from outside the social service sector with transferable skills and traits into the sector to take on volunteer management roles and contribute to SSAs' strategic planning function.

Video Consultation Infrastructure Scheme is provided by the Ministry of Health to fund the acquisition of equipment, allowing the Society to provide its services via video conferencing.

Government grant - Senior Activity Centre from the Ministry of Health is to fund the Senior Activity Centre at Block 287A, Compassvale Crescent, #01-151, Singapore 541287 for 2 months from 1 Feb 2021 to 31 Mar 2021 (2020: 6 months from 17 February 2020 to 16 August 2020).

BETHESDA COMMUNITY ASSISTANCE AND RELATIONSHIP ENRICHMENT CENTRE
(Registered in the Republic of Singapore)

NOTES TO THE FINANCIAL STATEMENTS, 31 MARCH 2021

12. GOVERNMENT GRANT – CARE AND SHARE MATCHING GRANT

	2021 S\$	2020 S\$
Grant received		
Opening balance	2,079,156	1,386,104
Receipt in current reporting period	-	693,052
Closing balance	2,079,156	2,079,156
Less: Amortisation		
Capital expenditure		
Opening balance	151,778	124,828
Amortisation in current reporting period	26,291	26,950
Closing balance	178,069	151,778
Operating expenditure		
Opening balance	626,599	518,037
Amortisation in current reporting period	3,800	108,562
Closing balance	630,399	626,599
	<u>1,270,688</u>	<u>1,300,779</u>

The main objective of the Care and Share Matching Grant is to provide social services and develop programmes to serve social service beneficiaries better.

The Care and Share grant may be used for the following purposes:

- a) to fund programmes/activities that contribute to the Society's capability to provide social services, activities relating to the Society's organisational development and manpower development;
- b) to fund programmes/activities that contribute to the Society's capacity, resources relating to the Society's ability to provide social services;
- c) to fund new programmes that aim to meet emerging or unmet needs of the social services sector and enhancements/expansion of the existing services that the Society's provides; and
- d) to cover the costs of meeting the critical existing needs of the Society, which may include recurrent expenditure on manpower and costs of running programmes.

BETHESDA COMMUNITY ASSISTANCE AND RELATIONSHIP ENRICHMENT CENTRE
(Registered in the Republic of Singapore)

NOTES TO THE FINANCIAL STATEMENTS, 31 MARCH 2021

13. INCOME

All income were generated from continuing activities and comprise:

	2021 S\$	2020 S\$
Amortisation of government grant:		
- Care and Share Matching Grant for capital expenditure (Note 12)	26,291	26,950
- Video Consultation Infrastructure (Note 11)	1,250	-
	<u>27,541</u>	<u>26,950</u>
Café sales	451	823
CDC start-up grant	69	69
Donations, non-tax exempt	13,282	19,327
Donations, tax exempt	128,529	337,305
Food and refreshments	-	5,723
Grants from funded programmes	801,307	393,658
Government grant payable written back	-	27,723
Holiday program fees	-	1,440
Interest income	13,002	17,625
Miscellaneous fees	3,774	5,776
Miscellaneous income	21,520	13,280
Registration fees	2,152	14,419
Rental of facilities	67,547	63,601
Sale of T-shirts, vests and others	588	1,032
Student care fees	180,854	252,870
Tuition and course fees	18,927	31,992
Traditional Chinese Medicine (TCM) income	-	7,760
	<u>1,279,543</u>	<u>1,221,373</u>

Included in grants from funded programs were:

	2021 S\$	2020 S\$
Care and Share Matching Grants (Note 12)	3,800	108,562
Jobs Support Scheme	147,280	-
Government grant		
- Senior Activity Centre (Note 11)	<u>64,992</u>	<u>15,000</u>

The Society did not carry out any fund-raising appeals in the reporting period.

BETHESDA COMMUNITY ASSISTANCE AND RELATIONSHIP ENRICHMENT CENTRE
(Registered in the Republic of Singapore)

NOTES TO THE FINANCIAL STATEMENTS, 31 MARCH 2021

14. STAFF COSTS

	2021	2020
	S\$	S\$
Salaries and other remuneration	673,404	625,309
Benefits-in-kind	785	825
CPF contributions	86,377	90,820
Other staff costs	14,980	16,091
Temporary and contract workers	540	11,654
	<u>776,086</u>	<u>744,699</u>

None of the Society's staff receives more than S\$100,000 in annual remuneration.

Included in the above staff costs were the following:

	2021	2020
	S\$	S\$
Key management personnel:		
Salaries and other remuneration	102,340	103,475
Benefits-in-kind	785	825
CPF contributions	<u>13,645</u>	<u>13,761</u>

Key management personnel comprises the Executive Director and Deputy Executive Director, with the authority and responsibilities for planning, directing and controlling the activities of the Society.

15. OTHER OPERATING EXPENSES

	2021	2020
	S\$	S\$
Included in other operating expenses were:		
Community outreach	12,218	27,726
Financial assistances	1,027	17,857
Food and refreshments, net	15,347	47,539
Professional fees	75,528	72,002
Lease expenses - short term leases	16,453	24,678
Repairs and maintenance	27,531	25,976
Sub-contracted tutors and helpers	31,628	35,533
Utilities	<u>20,836</u>	<u>31,287</u>

BETHESDA COMMUNITY ASSISTANCE AND RELATIONSHIP ENRICHMENT CENTRE
(Registered in the Republic of Singapore)

NOTES TO THE FINANCIAL STATEMENTS, 31 MARCH 2021

16. SIGNIFICANT RELATED PARTY TRANSACTIONS

During the reporting period, there were significant related party transactions, at terms agreed between the parties, as follows:

	2021	2020
	S\$	S\$
Accounting services rendered by a related party	54,000	54,000
Catering services by a related party	-	3,503
Payroll services rendered by a related party	9,300	9,300
Payment made on behalf by a related party	<u>270</u>	<u>-</u>

17. RECONCILIATION OF LIABILITIES ARISING FROM FINANCING ACTIVITIES

The table below details changes in the Society's liabilities arising from financing activities, including both cash and non-cash changes. Liabilities arising from financing activities are those for which cash flows were, or future cash flows will be, classified in the Society's statement of cash flows as cash flows from financing activities.

	2020	Cash flows	<u>Non-cash changes</u>		2021
			New lease arrangement (Note 5)	Rental rebates	
	S\$	S\$	S\$	S\$	S\$
Lease liabilities	<u>20,259</u>	<u>(17,002)</u>	<u>101,314</u>	<u>(12,160)</u>	<u>92,411</u>

	2019	Cash flows	<u>Non-cash changes</u>		2020
			Adoption of FRS 116 (Note 21)		
	S\$	S\$	S\$		S\$
Lease liabilities	<u>-</u>	<u>(27,730)</u>	<u>47,989</u>		<u>20,259</u>

BETHESDA COMMUNITY ASSISTANCE AND RELATIONSHIP ENRICHMENT CENTRE
(Registered in the Republic of Singapore)

NOTES TO THE FINANCIAL STATEMENTS, 31 MARCH 2021

18. OPERATING LEASE COMMITMENTS

At the end of the reporting period, the Society had the following future minimum lease receivables under non-cancellable operating leases in respect of rental of its leasehold property:

	2021	2020
	S\$	S\$
Receivable:		
Not later than 1 year	<u>20,350</u>	<u>18,500</u>

19. FINANCIAL INSTRUMENTS

Categories of financial instruments

The financial instruments as at the end of the reporting period were:

	2021	2020
	S\$	S\$
Financial assets, at amortised cost	1,861,798	1,591,513
Financial liabilities, at amortised cost	<u>1,517,919</u>	<u>1,465,619</u>

Financial risk management

The main risks arising from the Society's financial instruments are credit risk, interest rate risk and liquidity risk. The policies for managing each of these risks are summarised as follows:

19.1 Credit risk

Credit risk is the potential loss arising from any failure by the customers or debtors to fulfill their obligations as and when these obligations fall due.

As the Society does not hold any collateral, the carrying amounts of the financial assets represent the Society's maximum exposure to credit risk. No other financial assets carry a significant exposure to credit risk. There is no concentration of credit risk with respect to trade receivables at the end of the reporting period.

Credit risk on bank deposits is limited as these balances are placed with a financial institution which is regulated. Trade and other receivables that are neither past due nor impaired are creditworthy debtors with good collection track record with the Society. There are no classes of financial assets that are past due and/or impaired.

BETHESDA COMMUNITY ASSISTANCE AND RELATIONSHIP ENRICHMENT CENTRE
(Registered in the Republic of Singapore)

NOTES TO THE FINANCIAL STATEMENTS, 31 MARCH 2021

19. FINANCIAL INSTRUMENTS (CONTINUED)

Financial risk management (continued)

19.1 Credit risk (continued)

Trade receivables are non-interest bearing and are generally on 30 days' terms. They are recognised at their original invoice amounts which represent their fair values on initial recognition.

The management is of the opinion that there is no significant collection losses associated with its debtor balances as the management has credit policies in place and the exposure to credit risk is monitored on an ongoing basis.

19.2 Interest rate risk

Interest rate risk is the risk to earnings and value of financial instruments caused by fluctuations in interest rates.

The Society's exposure to risk for changes in interest rates relates primarily to its interest-bearing fixed deposits. The Society adopts a policy of constantly monitoring movements in interest rates to obtain the most favourable interest rate available in the market. Presently, the Society does not use derivative financial instruments to hedge its interest rate risk.

The management has assessed that for a 50 basis point change in fixed deposits interest rate at reporting date, assuming all other variables remain constant, the Society's exposure to the changes in interest rate is minimal and hence the resulting impact on profit or loss and accumulated funds of the Society is insignificant.

19.3 Liquidity risk

Liquidity risk is the risk the Society is unable to meet its cash flow obligations as and when they fall due.

The Society monitors its cash flow actively. The management expects the cash flows generated from normal course of operations to be adequate to ensure liquidity.

An ageing analysis of the Society's financial liabilities based on the remaining period at the end of the reporting period to the contractual maturity dates is included in Note 10 of the financial statements.

BETHESDA COMMUNITY ASSISTANCE AND RELATIONSHIP ENRICHMENT CENTRE
(Registered in the Republic of Singapore)

NOTES TO THE FINANCIAL STATEMENTS, 31 MARCH 2021

20. RESERVES POLICY

The Society's reserves position at the end of the reporting period were as follows:

	2021	2020	Increase /
	S\$	S\$	(Decrease)
Accumulated funds	<u>2,259,658</u>	<u>2,088,445</u>	8.20%
Ratio of total funds to annual operating expenditure	<u>2.04</u>	<u>1.75</u>	

The reserves that the Society has set aside provide financial stability and the means for the development of its principal activities. The management committee has set the Reserve Ratio to be 1.5.

21. ADOPTION OF NEW AND AMENDED STANDARDS AND INTERPRETATIONS

2020: The accounting policies adopted are consistent with those of the previous financial year except that in the current financial year, the Society has adopted all the new and amended standards which are relevant to the Society and are effective for annual financial periods beginning on or after 1 April 2019. Except for the adoption of FRS 116 Leases, the adoption of these standards did not have any material effect on the financial performance or position of the Society.

When the Society is the lessee

Prior to the adoption of FRS 116, non-cancellable operating lease payments were not recognised as liabilities in the statement of financial position. These payments were recognised as rental expenses over the lease term on a straight-line basis.

The Society's accounting policy on leases after the adoption of FRS 116 is as disclosed in Note 2.11.

On initial application of FRS 116, the Society has elected to apply the following practical expedients:

- i) For all contracts entered into before 1 April 2019 and that were previously identified as leases under FRS 17 Leases and INT FRS 104 Determining whether an Arrangement contains a Lease, the Society has not reassessed if such contracts contain leases under FRS 116; and

BETHESDA COMMUNITY ASSISTANCE AND RELATIONSHIP ENRICHMENT CENTRE
(Registered in the Republic of Singapore)

NOTES TO THE FINANCIAL STATEMENTS, 31 MARCH 2021

21. ADOPTION OF NEW AND AMENDED STANDARDS AND INTERPRETATIONS

- ii) On a lease-by-lease basis, the Society has:
- a) applied a single discount rate to a portfolio of leases with reasonably similar characteristics;
 - b) relied on previous assessments on whether leases are onerous as an alternative to performing an impairment review;
 - c) accounted for operating leases with a remaining lease term of less than 12 months as at 1 April 2019 as short-term leases;
 - d) excluded initial direct costs in the measurement of the right-of-use (“ROU”) asset at the date of initial application; and
 - e) used hindsight in determining the lease term where the contract contains options to extend or terminate the lease.

There were no onerous contracts as at 1 April 2019.

The Society has applied the following transition provisions:

- (i) On a lease-by-lease basis, the Society chose to measure its ROU assets (except for ROU assets which meet the definition of investment property) at an amount equal to the lease liability, adjusted by the amount of any prepaid or accrued lease payments relating to that lease recognised in the statement of financial position immediately before the date of initial application. For ROU assets which meet the definition of an investment property, the Society had measured the ROU assets at their fair values at 1 April 2019. Comparative information is not restated.
- (ii) Recongised its lease liabilities by discounting the remaining payments as at 1 April 2019 using the incremental borrowing rate for each portfolio of leases with reasonably similar characteristics.

BETHESDA COMMUNITY ASSISTANCE AND RELATIONSHIP ENRICHMENT CENTRE
(Registered in the Republic of Singapore)

NOTES TO THE FINANCIAL STATEMENTS, 31 MARCH 2021

21. **ADOPTION OF NEW AND AMENDED STANDARDS AND INTERPRETATIONS (CONTINUED)**

- (iii) For leases previously classified as finance leases, the carrying amount of the leased asset and finance lease liability as at 1 April 2019 are determined as the carrying amount of the ROU assets and lease liabilities.

The effects of adoption of FRS 116 on the Society's financial statements as at 1 April 2019 are as follows:

	As at
	01.04.2019
	S\$
Property and equipment (Note 5)	47,989
Lease liabilities (Note 17)	<u>(47,989)</u>

22. **COVID-19 PANDEMIC AND THE AFTERMATH**

At the date of these financial statements, the global COVID-19 outbreak remains fluid, as a result of which the Company cannot reasonably estimate the duration and severity of the disruptions, as well as ascertain the full extent of the probable impact on the Company's operating and financial performance. The management will continue to assess the impact of the COVID-19 outbreak on the Company.

BETHESDA COMMUNITY ASSISTANCE AND RELATIONSHIP ENRICHMENT CENTRE
(Registered in the Republic of Singapore)

NOTES TO THE FINANCIAL STATEMENTS, 31 MARCH 2021

23. **FRIENDSHIP AND MIND ENRICHMENT (“FAME”) CLUB PROGRAMME INCOME AND EXPENDITURE STATEMENT**

	2021 S\$	2020 S\$
INCOME		
Donations, tax exempt	2,225	470
Donations, non-tax exempt	-	1,112
Grant from NCSS	148,056	146,285
Government grant payable written back	-	27,723
Miscellaneous fee	-	29
Miscellaneous income	20	1,729
	<u>150,301</u>	<u>177,348</u>
Less:		
OPERATING EXPENDITURE		
Staff costs		
Staff salaries and bonuses	128,133	123,394
Staff CPF contributions	18,053	17,742
Other staff costs	2,024	2,112
Sub-contracted tutors and helpers	(10)	104
	<u>148,200</u>	<u>143,352</u>
Other operating expenses		
Consumables	55	403
Food and refreshments to beneficiaries, net	189	12,163
General expenses	64	160
Holiday program and outing expenses	83	303
Love gift to beneficiaries	-	1,757
Love gift to volunteers	-	1,920
Postage, printing and stationery	213	37
Prizes and awards	50	10
Professional fees	13,000	13,000
Lease expenses - short term leases	-	5,637
Rental of facilities	3,758	-
Telephone	73	-
Teaching materials	-	354
Transport charges	85	567
Transport reimbursement to members	426	4,730
Utilities	1,594	2,618
	<u>19,590</u>	<u>43,659</u>
	<u>167,790</u>	<u>187,011</u>
DEFICIT FOR THE FINANCIAL YEAR	<u>(17,489)</u>	<u>(9,663)</u>
RESTRICTED ACCUMULATED DEFICIT		
At the beginning of the year	(522,222)	(512,559)
At the end of the year	<u>(539,712)</u>	<u>(522,222)</u>

BETHESDA COMMUNITY ASSISTANCE AND RELATIONSHIP ENRICHMENT CENTRE
(Registered in the Republic of Singapore)

DETAILED INCOME AND EXPENDITURE ACCOUNTS
FOR THE FINANCIAL YEAR ENDED 31 MARCH 2021

	2021	2020
	S\$	S\$
INCOME		
Amortisation of deferred income	27,541	26,950
Café sales	451	823
CDC start-up grant	69	69
Donations, non-tax exempt	13,282	19,327
Donations, tax exempt	128,529	337,305
Food and refreshments	-	5,723
Grants from funded programmes	801,307	393,658
Government grant payable written back	-	27,723
Holiday program fees	-	1,440
Interest income	13,002	17,625
Miscellaneous fees	3,774	5,776
Miscellaneous income	21,520	13,280
Registration fees	2,152	14,419
Rental of facilities	67,547	63,601
Sale of T-shirts, vests and others	588	1,032
Student care fees	180,854	252,870
Tuition and course fees	18,927	31,992
TCM income	-	7,760
	<u>1,279,543</u>	<u>1,221,373</u>
Less:		
OPERATING EXPENDITURE	<u>1,108,330</u>	<u>1,196,517</u>
SURPLUS FOR THE YEAR	<u><u>171,213</u></u>	<u><u>24,856</u></u>

This schedule does not form part of the financial statements.

BETHESDA COMMUNITY ASSISTANCE AND RELATIONSHIP ENRICHMENT CENTRE
(Registered in the Republic of Singapore)

OPERATING EXPENDITURE
FOR THE FINANCIAL YEAR ENDED 31 MARCH 2021

	2021 S\$	2020 S\$
Finance costs		
Interest expense on lease liability	2,455	1,455
Staff costs		
Key management personnel salaries and bonuses	102,340	103,475
Key management personnel CPF contributions	13,645	13,761
Key management personnel benefits-in-kind	785	825
Staff salaries and bonuses	571,064	521,834
Staff CPF contributions	72,732	77,059
Other staff costs	14,980	16,091
Temporary and contract workers	540	11,654
	<u>776,086</u>	<u>744,699</u>
Other operating expenses		
Bank charges	403	901
Community outreach	12,218	27,726
Depreciation charges	106,934	102,238
Financial assistances	1,027	17,857
Food and refreshments, net	15,347	47,539
General expenses	2,986	3,917
Holiday program and outing expenses	544	12,964
Insurance	2,449	2,630
Postage, printing and stationery	2,084	2,939
Professional fees	75,528	72,002
Property tax	960	7,061
Rental of premises	16,453	24,678
Repairs and maintenance	27,531	25,976
Subcontracted tutors and helpers	31,628	35,533
Teaching materials	810	1,379
Telecommunications	10,621	9,413
Transport charges	1,430	18,330
TCM expenses	-	5,432
Uniform, T-shirts and others	-	561
Utilities	20,836	31,287
	<u>329,789</u>	<u>450,363</u>
TOTAL OPERATING EXPENDITURE	<u><u>1,108,330</u></u>	<u><u>1,196,517</u></u>

This schedule does not form part of the financial statements.

YOU CAN MAKE A DIFFERENCE TOO!!

Come partner with us as we continue to reach out to those in need.....

Bethesda CARE Centre depends on support from well-wishers to fund our programmes and services. Every bit counts. The changed lives of individuals are a testimony of how every contribution, big or small goes a long way in touching lives and impacting individuals.

One example is how one corporate donor has enabled us to love and care for the seniors in our midst....

Their generous donation has reached the seniors living in Compassvale Cape who are the beneficiaries. They have benefitted through the various programmes that were conducted for them in 2019 by BCARE Senior Activity Centre (SAC). Their contribution has brought such joy and life into the lives of these seniors who look forward to participate in the programmes as they socialize and learn new skills while keeping an active body and mind. We appreciate their kind support to a generation that has built the nation.



DONATIONS CAN BE MADE IN THE FOLLOWING WAYS:

CHEQUE Please make crossed cheque payable to "Bethesda CARE Centre"	BANK TRANSFER OCBC Bank A/C No: 629042045001	PAYNOW UEN S96SS0198KD01	giving.sg the city of good Online Donation
---	---	------------------------------------	---

BE A VOLUNTEER!

For more information:

<https://www.bcare.org.sg/volunteer/volunteer/>